

Skyline S7



JANOME

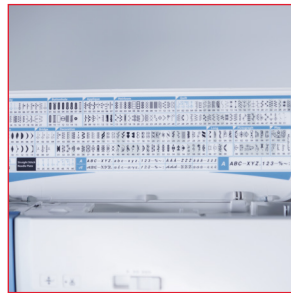
WHAT'S NEXT

— a story in every stitch —

Skyline S7



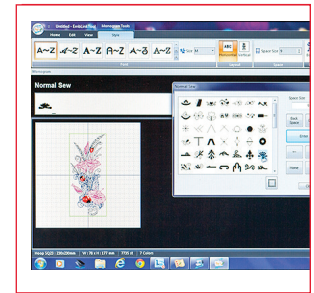
Automatic Presser Foot Lift



240 Built-in Stitches



AcuFeed Flex Layered Fabric Feeding System



Stitch Composer Stitch Creation Program

Features:

Sewing

- Top loading full rotary hook bobbin
- 240 built-in stitches
- 11 one-step buttonholes
- 7 built-in alphabets
- USB port for adding stitches
- Stitch Composer stitch creation program
- Automatic thread tension
- Built-in advanced needle threader
- Snap-on presser feet
- Easy set bobbin
- Bobbin winding plate with cutter
- Memorized needle up/down
- Automatic presser foot lift
- One-step needle plate conversion
- AcuFeed Flex layered fabric feeding system
- 7-piece feed dog
- Free arm
- Drop feed
- Variable zig zag for free motion quilting
- Start/stop button
- Speed control slider
- Locking stitch button
- Automatic thread cutter
- Twin needle guard
- Adjustable knee lift
- Extra high presser foot lift
- Automatic foot pressure adjustment
- Auto declutch bobbin winder
- LCD color touchscreen
- 6 LED lights in 3 convenient locations
- Maximum stitch width: 9mm
- Maximum stitch length: 5mm
- Sewing application support
- Maximum sewing speed: 1,000 SPM
- Work space: 8.25"x4.7" (210mmx120mm)
- Semi hard cover included

www.janome.com

JANOME
WHAT'S NEXT